

PPT2 Antibody (Center)
Affinity Purified Rabbit Polyclonal Antibody (Pab)
Catalog # AP14515c

Specification

PPT2 Antibody (Center) - Product Information

Application	WB, IHC-P,E
Primary Accession	O9UMR5
Other Accession	NP_005146.3 , NP_619731.1
Reactivity	Human
Host	Rabbit
Clonality	Polyclonal
Isotype	Rabbit IgG
Calculated MW	34225
Antigen Region	183-212

PPT2 Antibody (Center) - Additional Information

Gene ID 9374

Other Names

Lysosomal thioesterase PPT2, PPT-2, 312-, S-thioesterase G14, PPT2

Target/Specificity

This PPT2 antibody is generated from rabbits immunized with a KLH conjugated synthetic peptide between 183-212 amino acids from the Central region of human PPT2.

Dilution

WB~~1:1000

IHC-P~~1:10~50

E~~Use at an assay dependent concentration.

Format

Purified polyclonal antibody supplied in PBS with 0.09% (W/V) sodium azide. This antibody is purified through a protein A column, followed by peptide affinity purification.

Storage

Maintain refrigerated at 2-8°C for up to 2 weeks. For long term storage store at -20°C in small aliquots to prevent freeze-thaw cycles.

Precautions

PPT2 Antibody (Center) is for research use only and not for use in diagnostic or therapeutic procedures.

PPT2 Antibody (Center) - Protein Information

Name PPT2 ([HGNC:9326](#))

Function Catalyzes the cleavage of thioester bonds from S-palmitoyl- CoA or S-palmitoyl-N-acetylcysteamine (unbranched structures) but does not have activity against palmitoylcysteine or palmitoylated proteins, branched structures or bulky head groups. Conversely, hydrolyzes both long and short chain fatty acyl-CoA substrate.

Cellular Location

Lysosome.

Tissue Location

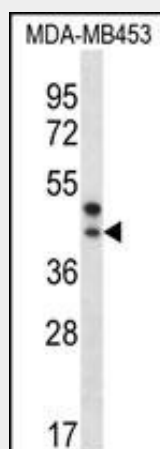
Broadly expressed, with highest levels in skeletal muscle.

PPT2 Antibody (Center) - Protocols

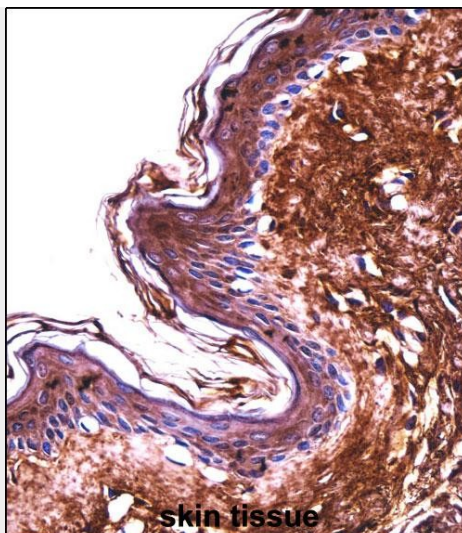
Provided below are standard protocols that you may find useful for product applications.

- [Western Blot](#)
- [Blocking Peptides](#)
- [Dot Blot](#)
- [Immunohistochemistry](#)
- [Immunofluorescence](#)
- [Immunoprecipitation](#)
- [Flow Cytometry](#)
- [Cell Culture](#)

PPT2 Antibody (Center) - Images



PPT2 Antibody (Center) (Cat. #AP14515c) western blot analysis in MDA-MB453 cell line lysates (35ug/lane). This demonstrates the PPT2 antibody detected the PPT2 protein (arrow).



PPT2 Antibody (Center) (AP14515c) immunohistochemistry analysis in formalin fixed and paraffin embedded human skin tissue followed by peroxidase conjugation of the secondary antibody and DAB staining. This data demonstrates the use of PPT2 Antibody (Center) for immunohistochemistry. Clinical relevance has not been evaluated.

PPT2 Antibody (Center) - Background

This gene encodes a member of the palmitoyl-protein thioesterase family. The encoded glycosylated lysosomal protein has palmitoyl-CoA hydrolase activity in vitro, but does not hydrolyze palmitate from cysteine residues in proteins. Three transcript variants encoding different isoforms have been described for this gene, with one of the isoforms being inactive. [provided by RefSeq].

PPT2 Antibody (Center) - References

Hancock, D.B., et al. Nat. Genet. 42(1):45-52(2010)
Barcellos, L.F., et al. PLoS Genet. 5 (10), E1000696 (2009) :
McKinnon, E., et al. Diabetes Obes Metab 11 SUPPL 1, 92-100 (2009) :
Lamesch, P., et al. Genomics 89(3):307-315(2007)
Sleat, D.E., et al. Mol. Cell Proteomics 5(4):686-701(2006)